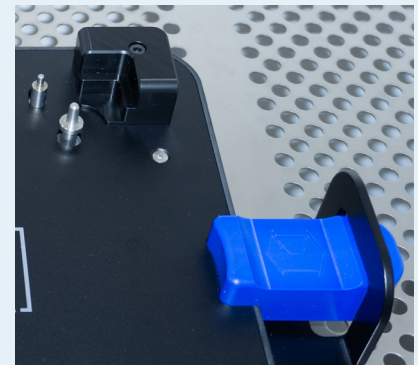
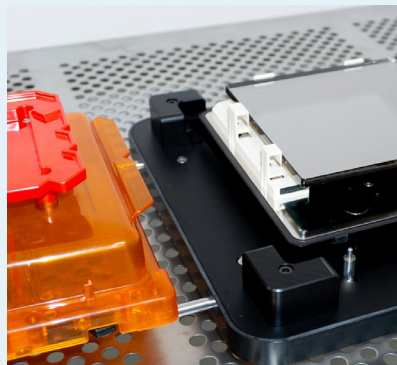
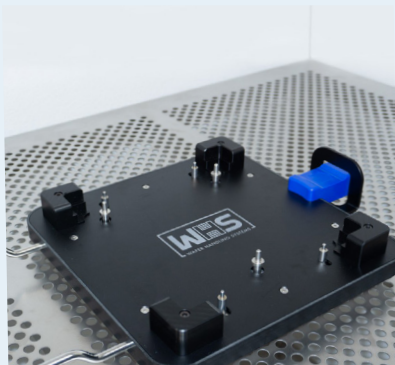
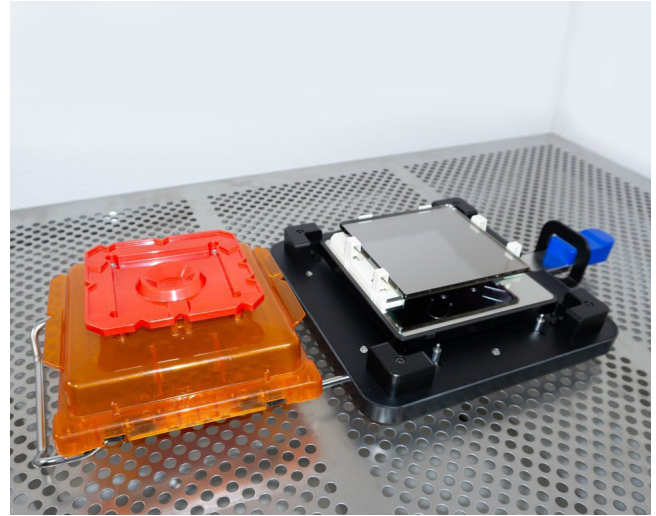


MANUAL RSP150 OPENER

The WHS-O1-RSP150 is a precision-engineered manual pod opener designed for the secure opening and closing of RSP150 reticle SMIF pods. Built for use in semiconductor environments, this compact tabletop tool unlocks the RSP's four spring-loaded lock pins, allowing for effortless lid removal and placement. The WHS-O1 integrates a built-in lid storage rack to maintain cleanliness and organization during use, ensuring the pod's lid remains contamination-free.

Constructed from durable, antistatic, and abrasion-resistant materials, the WHS-O1 protects valuable reticles while complying with ISO 3 (FS209E Class 1) cleanroom standards. This ensures the highest level of protection and performance in sensitive cleanroom environments. Its ergonomic design allows for easy operation by both left- and right-handed users, reducing operator fatigue during repetitive use.



The WHS-O1 is compatible with all SEMI E111 (single) and E112 (multi-stack) RSP150 pods, making it a versatile solution for manual pod handling in semiconductor manufacturing. Its small footprint makes it an efficient addition to any workstation, while its rugged construction guarantees long-lasting performance.

Whether for mask storage or reticle transport, the WHS-O1 offers a user-friendly, reliable solution for maintaining the integrity of sensitive components. Manufactured in an ISO9001 certified facility and CE certified, this tool provides unmatched protection and convenience for the semiconductor industry.

FEATURES AND ADVANTAGES

- Precision opener for RSP150 reticle SMIF pods
- Antistatic and abrasion-resistant materials for protection
- Integrated lid holder to prevent contamination during use
- Ergonomic design for left- or right-hand operation
- Compatible with SEMI E111 and E112 RSP150 pods

MANUAL RSP150 OPENER

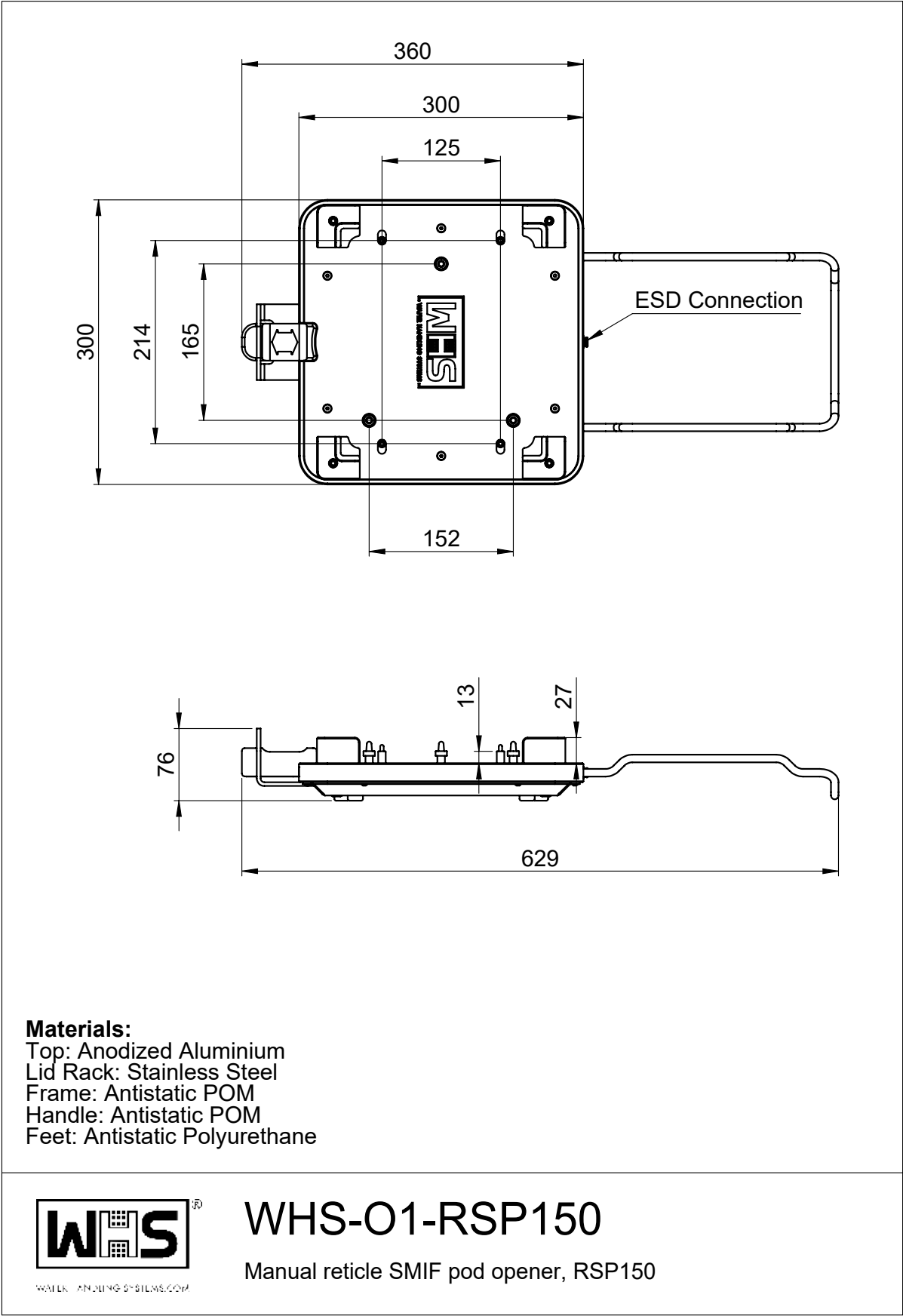
ITEM	SPECIFICATIONS
Pod type	RSP150 (E111 or E112)
Material, base	Anodized aluminum
Material, lid rack	316 stainless steel
Material, guides/handle	Antistatic Polyoxymethylene
Cleanliness	ISO 3 (Class 1 FS209E)



ORDERING INFORMATION

WHS-O1 -	RSP150
CODE	MODEL
RSP150	Manual RSP150 pod opener

REV012025



date: 01-10-2022 | scale: 1:5 | entity: mm | This drawing is owned by WHS trademark and may not be copied, reproduced or shown to third parties without written permission.

REV012025